

# **RICHLAND COUNTY EMERGENCY SUPPORT FUNCTION (ESF) 11**

## **AGRICULTURE AND NATURAL RESOURCES**

**LEAD COORDINATING AGENCY:** Richland County Emergency Management

**LEAD ADVISORY AGENCY:** Extension Richland County

**SUPPORT AGENCIES:** Richland County Public Health  
Local Veterinarians

**STATE SUPPORTING AGENCIES:** Wisconsin Department of Agriculture, Trade and Consumer Protection  
Wisconsin DNR  
Wisconsin Emergency Management

**FEDERAL COORDINATING AGENCY:** United States Department of Agriculture

### **I. INTRODUCTION**

#### **A. Purpose**

The purpose of this ESF is to coordinate and support county and local authorities' efforts to respond effectively to an incident involving agriculture, food, natural or cultural resources and provide a process to integrate state and federal ESF 11 response/recovery actions.

#### **B. Scope**

Provides for a coordinated response to incidents involving food, agricultural, cultural or natural resources in Richland County by identifying roles and responsibilities of various county and local agencies with statutory and/or emergency management-based responsibilities and assets to support response and recovery operations including:

- (1) control and eradicate or manage foreign animal diseases (including infectious, non-infectious and zoonotic diseases);
- (2) control and eradicate or manage exotic plant diseases;
- (3) control and eradicate or manage exotic pest infestations;
- (4) assurance of food safety and nutrition assistance;
- (5) protect Natural and Cultural Resources and Historic Properties (NCH) resources prior to, during, and/or after a disaster.

## II. POLICIES

State ESF 11 provides technical advice and assistance to county and local governments, professional animal health organizations and industry during an ESF 11-related incident. ESF 11 coordinates the response and recovery activities in Richland County with local, state, federal and private agencies during an incident that involves agricultural and/or natural or cultural resources.

### State Agency Policies as related to ESF 11

The Department of Agriculture, Trade and Consumer Protection (DATCP) has broad authority to investigate and control animal diseases, investigate and eradicate plant infestations, and exotic pest species, and to ensure the safety of our food supplies through inspections and other activities. These authorities are found in Wisconsin State Statutes. Among other things, the department may test animals, regulate imports and movement of animals and plants and impose quarantines on diseased plants and animals.

The Wisconsin Department of Natural Resources (WDNR) has authority for natural resources, wildlife that may be affected by a foreign animal disease, and environmental regulations for activities conducted as part of ESF 11, including carcass management and incineration. These authorities are found in Wisconsin State Statutes.

The Wisconsin Historical Society (WHS) duties and responsibilities include serving as the principal historic preservation agency of the state, identification of historic and archeological sites, review of federal and state funded, licensed, and permitted activities that affect cultural and historic properties. Their general responsibilities related to cultural and historic resources are listed in [sec. 44.34, Wis. Stats.](#) Cooperation with other state agencies is found in [sec. 44.39](#) and [44.40, Wis. Stats.](#) Protection of human burials from disturbance is found in [sec. 157.70, Wis. Stats.](#)

The Department of Public Instruction (DPI) duties and responsibilities include: maintaining liaison with the American Red Cross to coordinate resources in a presidentially declared disaster to provide relief through release of USDA commodities for congregate feeding. DPI may determine that a situation warrants the use of USDA commodities for congregate or household distribution, without a presidential declaration. The DPI may coordinate with the Red Cross to the extent funds are available for replacement of the commodities.

The general powers and duties of the Wisconsin Department of Health Services (WDHS) are listed in [sec. 250.04, Wis. Stats.](#) The department may require isolation of patients, quarantine of contacts, concurrent and terminal disinfection or modified forms of these procedures as provided by [sec. 252.06, Wis. Stats.](#) Additional authority to protect public safety in the case of communicable disease can be found in [Secs. 252.185, 252.19](#) and [252.21, Wis. Stats.](#)

Richland County ESF 11 coordinates activities with the following Richland County ESFs:

- ESF 1 (Evacuation and Transportation Resources),
- ESF 2 (Communications),
- ESF 5 (Emergency Management),
- ESF 8 (Health and Medical Services),

- ESF 13 (Public Safety)
- ESF 15 (External Affairs).

### III. CONCEPT OF OPERATIONS

Implementation of ESF 11 will be a State directed process. County implementation of ESF 11 will be based on a notification by one of the primary state or federal ESF 11 agencies. The main county agencies responsible for implementing ESF-11 are Richland County UW-Extension and Public Health.

Local officials, governmental and non-governmental agencies will be actively involved in the response and will be utilized. Each county and local government has an Emergency Response Plan (\*ERP), which provides the framework for the jurisdiction's response to an emergency or disaster. County and local emergency managers/directors may utilize their resources and provide additional lines of communication with and for local producer/processors and the local Extension Office.

The County Administrator, or designee, per [State Statute 323](#), will maintain direction and control of governmental activities; declare a county emergency through the normal process described in the RCERP; and provide local resources as available.

#### A. General

1. County and local response activities focus on meeting response and recovery activities by committing human, financial and material resources to the impacted area, as appropriate.
2. Recovery efforts are initiated concurrently with response activities. Close coordination is required among the federal, state, county and local volunteer agencies responsible for response and recovery operations.
3. Richland County UW-Extension will coordinate the functions of ESF 11 during an activation of the County Emergency Operations Center (EOC) and will coordinate the locally provided resources with DATCP and other appropriate state and private organization resources with the Emergency Management Director/EOC Manager. State ESF 11 staff will coordinate with Federal ESF 11 counterparts.
4. ESF 11 functions are divided into five main areas. The principal activities for each functional area are described in the following sections.
  - a. **Foreign animal disease surveillance and response.** This includes the implementation of an integrated federal, state and local response to an outbreak of a foreign animal disease (FAD), including infectious, non-infectious and zoonotic disease.

Animal diseases are found by either the local livestock producers noticing an unusual condition in their animals or through routine surveillance activities (i.e. sampling done through the national poultry improvement plans, etc.) Animal assessments can be performed by

either private veterinarians or by state or federal veterinarians, depending on the situation.

If a foreign animal disease is suspected, there are procedures that must be followed to confirm the presence of the disease and to contain and/or eradicate the disease (see Appendix 2 for Animal Disease Response Flowcharts).

- b. **Plant Disease and Pest Infestation surveillance and response:** This includes the implementation of an integrated federal, state and local response to a plant disease or pest infestation.

Plant diseases and pest infestations can be found by a variety of partners, including private landowners, nurseries, or government inspections. For species of concern, such as soybean rust, gypsy moth or emerald ash borer, there are surveillance programs established to monitor their presence.

If a plant disease or pest is suspected, there are procedures that are followed to confirm the presence of the disease or pest, and to contain and/or eradicate the disease or pest.

- c. **Assurance of the safety of the commercial food supply:** This includes the inspection and verification of food safety aspects of slaughter and processing plants, products in distribution and retail sites, and import facilities at ports of entry; laboratory analysis of food samples; control of products suspected to be adulterated; plant closures; foodborne disease surveillance; and field investigations.

The safety of the food supplies is assured through various types of inspections and surveillance activities, involving public and private local and state partners.

- d. **Provision of nutrition assistance:** This includes determining nutrition assistance needs, obtaining appropriate food supplies, arranging for delivery of the supplies, and authorizing disaster food stamps.

While the federal government plays a major role in determining nutrition assistance and obtaining food supplies, the Department of Public Instruction has some capabilities in this regards via the school lunch program. The commodities obtained in this program can be accessed during an emergency.

USDA can authorize the Department of Health and Family Services to release their commodity food supplies to feed people at shelters and mass feeding sites. In addition, if the president declares a disaster, and with USDA approval, commodity foods can be directly distributed to households that are affected by the emergency.

In addition, the Food Share program which replaces the food stamp program, may be accessed during an emergency with USDA approval.

- e. **Protection of Natural, Cultural and Historic resources:** This includes appropriate response actions to conserve, rehabilitate, recover, and restore NCH resources.

The Department of Natural Resources and the Wisconsin Historical Society are responsible for natural and cultural resource protection.

## **B. Organization**

During an emergency or disaster situation, the primary and support agencies of ESF 11 will assign personnel to the County EOC. Richland County UW-Extension, as the responsible agency for implementing ESF 11, will respond directly to the Emergency Management Director/EOC Manager in the County EOC. More specifically, Richland County Agricultural Agent will work directly with Local Extension Staff and the Emergency Management Director regardless of whether an EOC is opened or not.

ESF 11 emergency operations will coordinate as appropriate during an activation of the County EOC and will coordinate the resources of the appropriate county agencies with Operations/OIC.

## **C. Mitigation Activities**

1. Identify new technology and procedures for use in completing the ESF 11 activities.
2. Identify areas where mutual aid agreements are or should be in place.
3. Identify areas where public education detailing ESF 11 functions are needed.
4. Identify specific resources and equipment, including those held publicly and privately, that will be required to implement the ESF 11 activities.
5. Identify requirements for ESF 11 standard operating procedures, plans and checklists for Primary and Supporting Agencies.
6. Identify communication needs.
7. Identify ESF 11 training and exercising requirements.
8. Identify, develop and incorporate, as necessary
  - a. Private sector capabilities and resources
  - b. Backup response and recovery processes

#### **D. Preparedness Activities**

1. Develop, revise and/or maintain standard operating procedures and other plans and procedures as necessary for the ESF 11 operations.
2. Develop and conduct training and exercise programs involving ESF 11 functions.
3. Develop and maintain a contact list of agencies and organizations involved with ESF 11 operations, including staff and staff support rosters.
4. Develop and maintain ESF 11 resource lists, including a contact notification list with essential information included, such as resources location address, telephone, cellular and facsimile numbers, and email addresses.
5. Ensure that copies of all necessary ESF 11-specific emergency manuals, plans and procedures, and other reference materials are located in the County Emergency Operations Center.
6. Assist municipalities in the preparation and development of food and agriculture response plans, as well as plans for natural and cultural resources, as deemed necessary.
7. Plan, conduct and evaluate public education programs for prevention, preparedness, response and recovery. These programs should include participation from local veterinarians, FFA clubs and 4-H groups.
8. Assist in the maintenance and expansion of programs such as the [Wisconsin Veterinary Corps](#) at the county/local level to prepare volunteers for terrorism incident support for food and agriculture incidents.
9. Support coordination and cooperation between governmental, private sector and non-governmental agencies to facilitate response efforts.

#### **E. Response Activities**

1. County ESF 11 staff will support response activities for the control and eradication of a foreign animal disease in Richland County and the State of Wisconsin through coordination with DATCP and the USDA – Animal and Plant Health Inspection Service– Veterinary Services (APHIS – VS), and the Department of Natural Resources (DNR) .
2. Provide technical advice to the County Emergency Management Director/EOC Officer in Charge on matters related to the containment and eradication of any foreign animal disease. Provide support and technical assistance and coordination assistance to county and local emergency managers.
3. Maintain liaison with local and county government and volunteer service agencies.

4. Work with County Public Health Department to issue advisories and protective action recommendations to the public as necessary. Provide accurate, consistent and timely information to the public.

#### **F. Recovery Activities**

1. Continue coordination/monitoring of the management of plant and animal disease and pest infestations, food safety, and Natural and Cultural Resources and Historic Properties (NCH).
2. Continue to maintain liaison with local and county government to manage volunteer service response activities.
3. Continue to coordinate services to farmers affected by an incident through the local office of the [Farm Services Agency](#).

### **IV. RESPONSIBILITIES**

#### **A. County Agencies**

Local officials, governmental and non-governmental agencies will be actively involved in the response and should be utilized. Each county and local government has an Emergency Response Plan (ERP), which provides the framework for the jurisdiction's response to an emergency or disaster. County and local emergency managers/directors may utilize their resources and provide additional lines of communication with and for local producer/processors and the local Cooperative Extension Service.

##### **1. UW-Extension Office**

The Richland County UW-Extension Office will assist with information, connections and facilitation by being able to identify this type of disaster emergency. The Extension Agriculture Agent will provide assistance with animal diseases, plant diseases and plant infestations. The Human Development & Relationships Educator and the FoodWise Coordinator, will assist with assurance of food, safety and nutrition needs. UW-Extension utilizes the Department of Health & Human Services to assess the need for nutrition assistance for the general and/or special needs population.

##### **2. County Emergency Management**

The County Emergency Management Director will receive an early alert of a suspected disease from DATCP officials should the health evaluation warrant it. At the time of disease confirmation, the County may decide to activate the EOC. The role and responsibilities of the Emergency Manager will remain the same as in other disasters; that is to coordinate requests for additional support, communicate with and advise the County Administrator, local elected officials and Wisconsin Emergency Management (WEM) of local conditions and activities.



### **3. County Sheriff's Office**

The Richland County Sheriff's Office serving the county will receive an early alert of a suspected foreign animal or plant disease or pest infestation from officials at DATCP should the health evaluation warrant it. At the time of disease confirmation, the Sheriff will become a member of the command structure for the event and may assume the command position for local law enforcement functions. The Sheriff's Office will provide the initial incident security to the personnel and the quarantine zone. The Sheriff's Office will provide communications support and will coordinate local law enforcement response with support from the Wisconsin State Patrol and the National Guard if activated. Other roles and responsibilities during a disaster are outlined in other ESFs of the RCERP.

### **4. County Chief Elected Officials**

The chief local elected officials will maintain direction and control of governmental activities; while the County Administrator declares a county emergency through the normal process described in the RCERP; and provides local resources as available.

The County Administrator and Emergency Manager will use the Incident Command system, participating in an appropriate NIMS command structure with other agencies and responders such as the Wisconsin Department of Agriculture, Trade and Consumer Protection (DATCP) and/or USDA.

The County Department Heads, involved with ESF 11, will coordinate the documentation of all disaster related expenses such as personnel time, overtime, equipment usage, in-kind or stocked materials, etc. and will follow accepted accounting procedures. The County and local jurisdiction will document their own disaster related expenses and make the data available as requested.

### **5. Fire Service**

The local fire services will, within their limits of training and equipment, provide assistance with decontamination, bio-hazardous material and protection as required by the Veterinary Emergency Team during the animal carcass disposal process.

### **6. County Highway Department**

The County Highway Department will respond to requests as in other disasters with emphasis on traffic control in the quarantine zone. In support of the law enforcement agencies, they will identify the sustainability of roads and bridges necessary for re-routing traffic from the quarantine zone. They may also assist by providing excavation and transportation equipment and operators to move soil, carcasses or debris as directed.

### **7. County Public Health Department**

The County Health Department will support the Wisconsin Department of Health Services, Volunteer Organizations Active in Disasters (VOAD), and local volunteer county agencies in providing overall leadership, coordination, assessment and technical assistance for public health needs in the event of a disaster or emergency.



Other functions are described in ESF 8. They will also provide assistance and epidemiology services in dealing with zoonotic (animal spread to humans) diseases.

## **B. Volunteer Agencies**

### **1. Wisconsin Veterinary Corps/Humane Society**

The Wisconsin Veterinary Corps is a group of veterinarians, veterinary technicians, veterinary assistants, students enrolled in veterinary programs, and other interested persons that receive special training to respond to animal emergencies, bioterrorism and natural disasters. They are able to respond to local and state animal emergencies that exceed local or state capabilities. In a disaster, they can also help with animal care and treatment, rescue, sheltering, mass casualty care, evacuation, vaccination, specimen collection, decontamination, euthanasia, necropsy, and other support activities.

### **2. American Red Cross**

Under the direction of Emergency Management, the American Red Cross will coordinate sheltering operations and/or feeding operations at specified sites.

Identify and assess the requirements for food and distribution services on a two-phase basis: critical emergency needs immediately after the disaster, and longer-term sustained needs after the emergency is over.

## **V. RESOURCE REQUIREMENTS**

Resources will be requested and distributed according to appropriate SOP's and manuals.

## **VI. REFERENCES (located in EOC and the following sites):**

United States Department of Agriculture (USDA)—Animal and Plant Health Inspection Services – [www.aphis.usda.gov/](http://www.aphis.usda.gov/);  
Extension Disaster Education Network (EDEN)—Reducing the Impact of Disasters through Education – [eden.lsu.edu/Pages/default.aspx](http://eden.lsu.edu/Pages/default.aspx);  
Emergency Response – Agricultural Biosecurity, Emergency Preparedness and Response – [www.uwex.edu/ces/ageemergency/response/](http://www.uwex.edu/ces/ageemergency/response/)  
Agricultural Biosecurity – [www.uwex.edu/ces/agemergency/biosecurity](http://www.uwex.edu/ces/agemergency/biosecurity)  
Related Links – [www.uwex.edu/ces/agemergency/related/index.cfm](http://www.uwex.edu/ces/agemergency/related/index.cfm)  
How to Report Animal Diseases – Dept. of Agriculture, Trade & Consumer Protection – [www.datcp.state.wi.us/ah/agriculture/animals/disease/reporting-disease/](http://www.datcp.state.wi.us/ah/agriculture/animals/disease/reporting-disease/)

## **VII. APPENDICES**

- Appendix 1 – Lead, Support, and State and Federal Agencies Contact Lists
- Appendix 2 – Flowchart of Animal Disease Response Events
- Appendix 3 – Wisconsin Veterinarian Corps

## **VIII. ATTACHMENTS**

- Attachment 1: Agency Approval Signature Sheet

## APPENDIX 1: LEAD, SUPPORT, AND STATE AND FEDERAL AGENCIES CONTACT LISTS

### LEAD SUPPORTING AGENCY CONTACT NUMBER:

Richland County UW-Extension – (608) 647-6148

### SUPPORTING AGENCIES CONTACT TELEPHONE NUMBERS:

Richland County Emergency Management – (608) 647-8187  
Richland County Sheriff's Department – (608) 647-2106  
Richland County Department of Health & Human Services – (608) 647-8821  
Richland County Highway Department – (608) 647-4707  
Richland County Local Veterinarian Facilities:  
    Richland Veterinary Services – (608) 647-8944  
    Riverdale Veterinary Clinic – (608) 739-3123  
    Dodgeville Veterinary Clinic – (608) 935-2306

### STATE & FEDERAL CONTACT AGENCIES:

#### State of Wisconsin

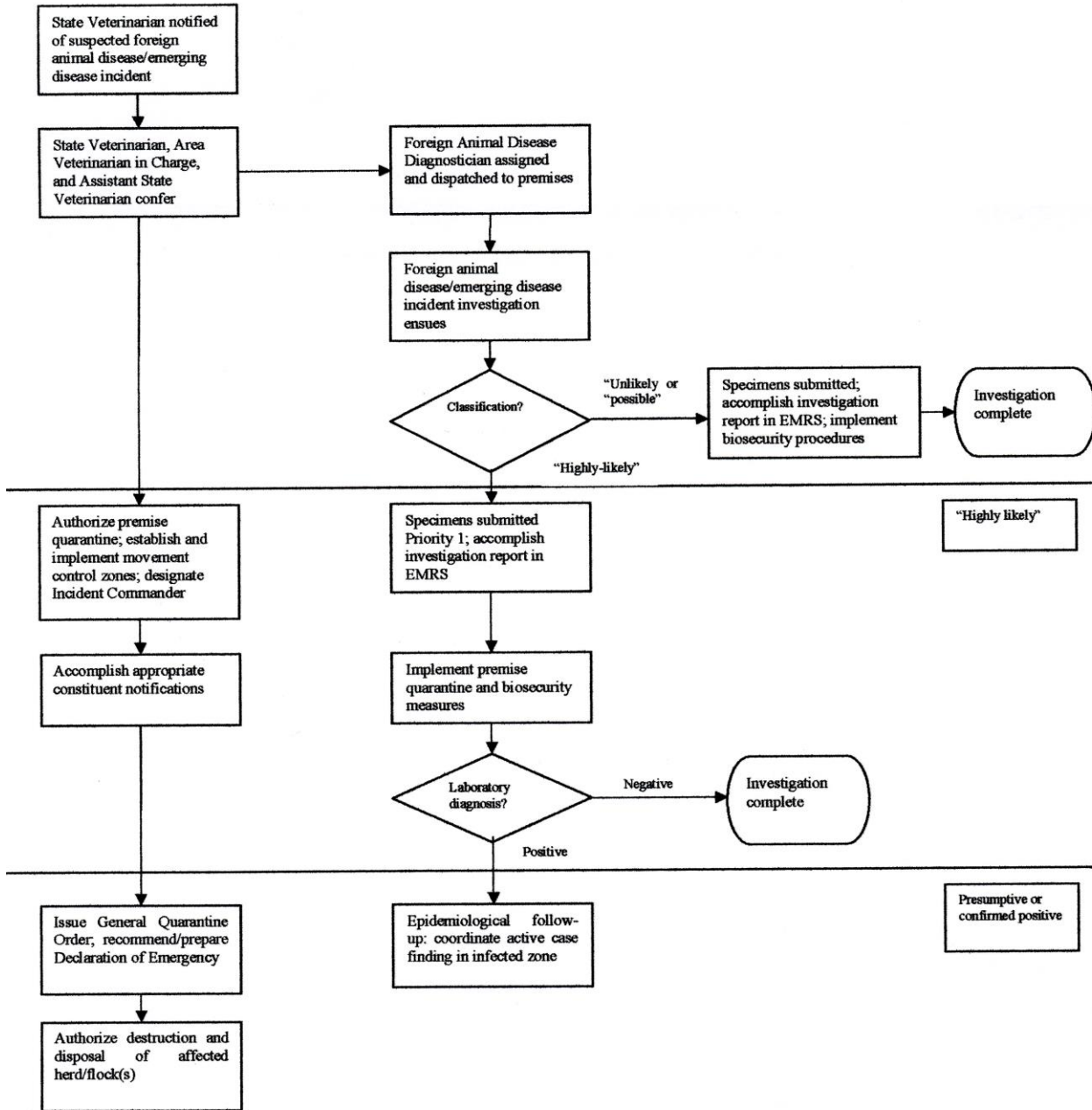
Veterinarian Contact for Wisconsin Department of Agriculture, Trade & Consumer Protection (DATCP) – Kim Kesserich (608) 297-2870 (Office); (608) 444-5047 (Cell)  
Wisconsin Division of Animal Health – (608) 224-4872  
Department of Natural Resources Service Center (Wisconsin Rapids) – (715) 421-7800  
WEM Duty Officer – **(800) 943-0003**

#### USDA Contacts

U.S. Department of Agriculture, Animal and Plant Health Inspection Service; Veterinary Services, National Preparedness and Incident Coordination -- Emergency ONLY: **800-940-6524**  
U.S. Department of Agriculture Veterinary Services – (608) 662-0600  
Animal & Plant Health Inspection Service (APHIS – USDA):  
    Animal Contact – (608) 270-4000  
    Plant Contact – (608) 231-9545

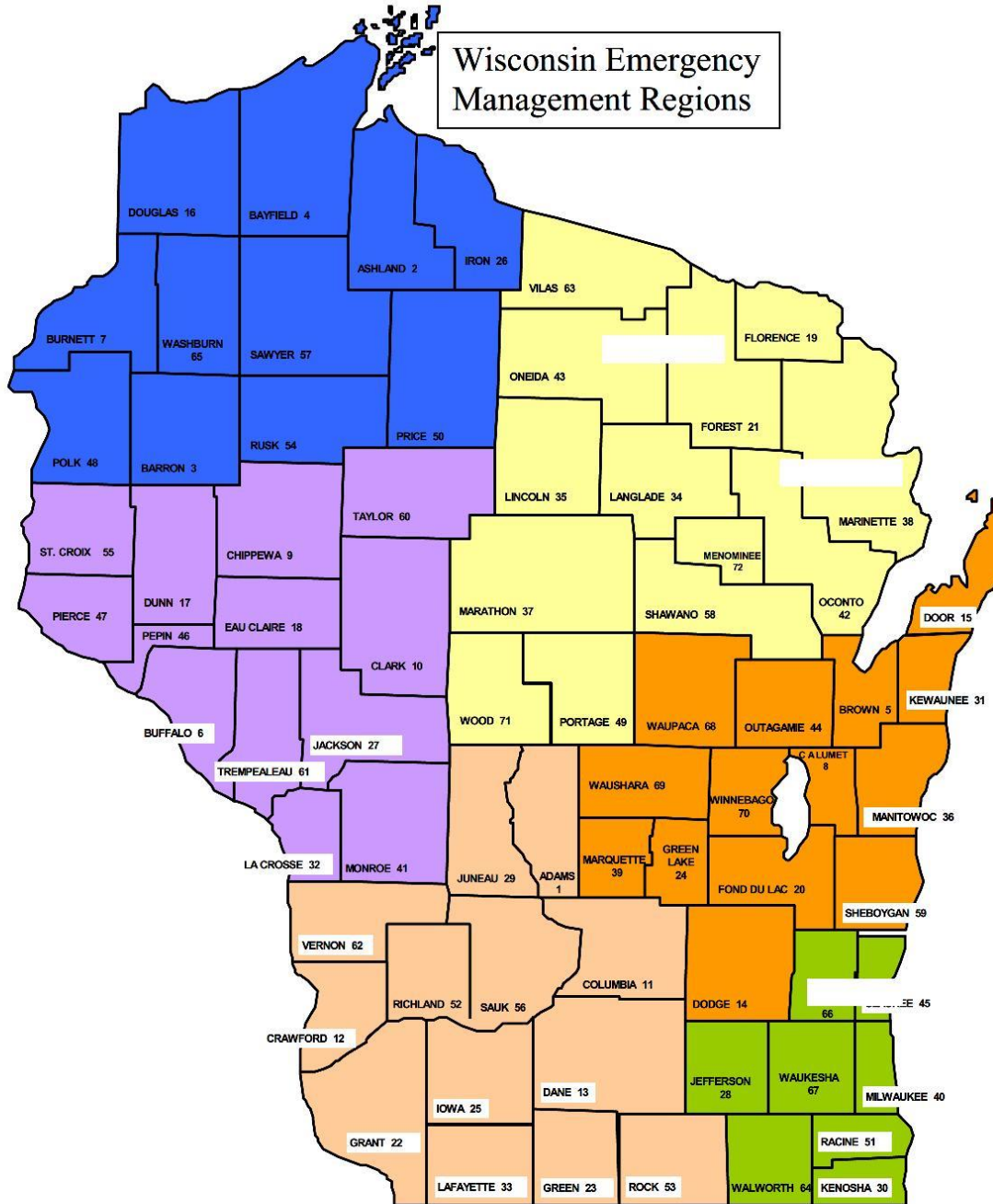
## APPENDIX 2: FLOWCHART OF ANIMAL DISEASE RESPONSE EVENTS

### FLOW CHART OF EVENTS



APPENDIX 3: WISCONSIN VETERINARIAN CORPS

# Wisconsin Veterinary Corps

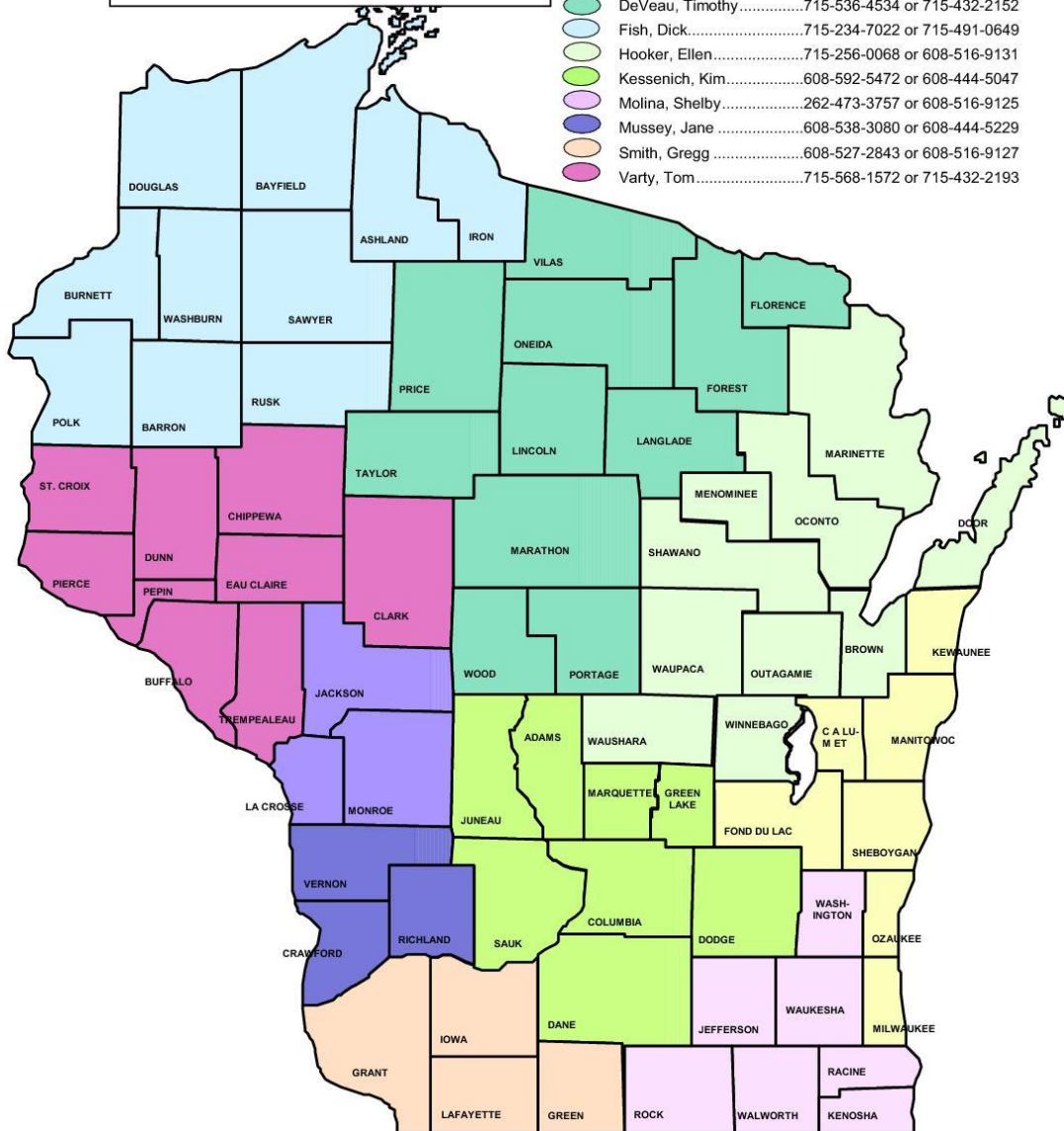


c:\data\world\data\forms\maps\blnkmap.doc pc2865 Nov-00

# Wisconsin Veterinary Corps

## DAH District Veterinarians

- Balzer, Libby.....608-269-0604 or 608-516-9128
- Bertz, Dick .....920-999-2803 or 608-444-3546
- DeVeau, Timothy.....715-536-4534 or 715-432-2152
- Fish, Dick.....715-234-7022 or 715-491-0649
- Hooker, Ellen.....715-256-0068 or 608-516-9131
- Kessenich, Kim.....608-592-5472 or 608-444-5047
- Molina, Shelby.....262-473-3757 or 608-516-9125
- Mussey, Jane .....608-538-3080 or 608-444-5229
- Smith, Gregg .....608-527-2843 or 608-516-9127
- Varty, Tom.....715-568-1572 or 715-432-2193



If you find clinical signs that could be a foreign animal disease, you need to notify either the Wisconsin Department of Agriculture, Trade and Consumer Protection (DATCP) or the U.S. Department of Agriculture (USDA). **You need to talk to someone**, not leave a message on a machine or with a spouse or child in the case of a home office. Keep calling until you get someone on the phone:

**During business hours:**

Your district veterinarian (listed above)  
 DATCP-Animal Health Division 608-224-4872  
 USDA-Veterinary Services 608-270-4000

**Evenings and weekends:**

Gerald Ruch, DVM 608-838-6690  
 Robert Ehlenfeldt, DVM 608-837-9705  
 Linn Wilbur, DVM 608-442-9505 (608-347-5264 cell)  
 Ty Vannieuwenhoven, DVM 608-821-0126 (608-628-6874 cell)

**ATTACHMENT 1 (Agency Approval Signature Sheet)**

The undersigned have hereby reviewed and approved the Emergency Support Function 11 Agriculture and Natural Resources of the County Emergency Response Plan.

\_\_\_\_\_  
**County Administrator**

\_\_\_\_\_  
**Date**

\_\_\_\_\_  
**Emergency Management Director**

\_\_\_\_\_  
**Date**



**7-20-2023**

\_\_\_\_\_  
**Extension Richland County**

\_\_\_\_\_  
**Date**